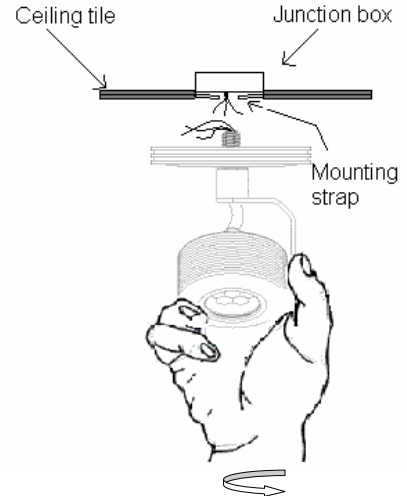


**MINI FLOOD MOUNTING:**



**YOKE AND BASE MOUNT**

- Ensure junction box has a mounting strap in place with a threaded hole and the required electrical wires are run in order to connect the fixtures
- Position fixture over junction box then connect wires according to the fixture type (RGB or fixed color) as detailed on page 2 of this installation guide
- Tuck excess wires inside junction box
- Firmly hold the fixture body and screw it's threaded pipe (clockwise) into the hole of the mounting strap until fixture until base is flush with ceiling or surface
- Adjust mounting angle of the fixture head as desired



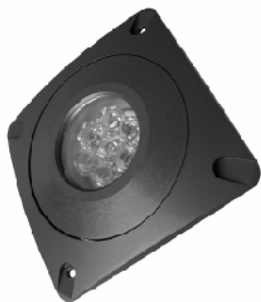
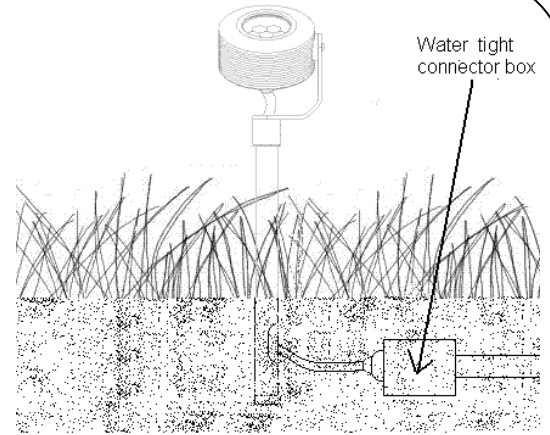
After connecting wires, hold fixture firmly and screw into mounting strap



**POST MOUNT**

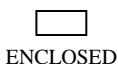
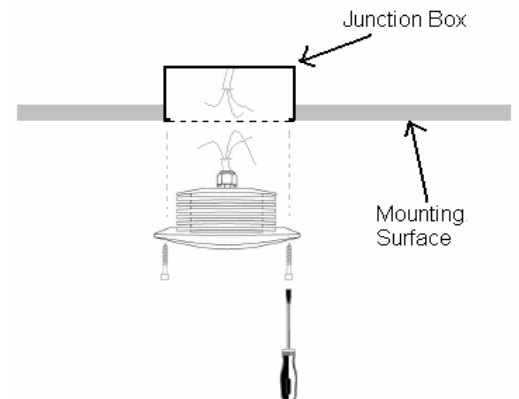
Post mount fixtures target outdoor/landscaping applications; it is usually mounted in the ground at the desired location. The soil at this ideal location should not be too loose or contain too much gravel or stone that would inhibit proper mounting of the fixture.

- Run electrical wires to desired location; a water tight connector box should be used to connect fixture and supply wires.
- At the desired location, stick the fixture's metal post into the ground.
- Ensure that the post is fitted deep enough so that the fixture can firmly stand on its own
- Insert the fixture wires inside the water tight connector box and connect wires according to the fixture type (RGB or fixed color) as detailed on page 2 of this installation guide
- Adjust the mounting angle of the fixture head as desired



**IN-GRADE PUCK MOUNT**

- Ensure the junction box is of the correct size; its mounting holes should be aligned with and match those on the fixture when they are put together. Also ensure that the required electrical wires are run in order to connect the fixtures
- Position fixture over junction box and then connect wires according to the fixture type (RGB or fixed color) as detailed on page 2 of this installation guide
- Tuck excess wires inside junction box
- Insert a screw through the mounting hole in the fixture then screw it into the hole in the junction box; repeat for second screw
- Tighten the screws just enough to ensure the fixture is flush with the surface



**MINI FLOOD ELECTRICAL CONNECTION:**

RED  
BLK

POWER SUPPLY UNIT

24V  
GND

A/C IN

All other wires are not used, are unconnected, and can be cut off.

**SINGLE COLOR  
NON DIMMABLE**

□

ENCLOSED

- Locate and mount Power supply according to manufacturer's safety and installation guidelines provided with the power supply
- Connect RED wires from fixture to 24VDC terminal on power supply. A switch may be connected in series for on/off operation
- Connect the Black wire to the ground terminal of the power supply.
- If a white wire is present, connect it also to GND.
- ALL OTHER WIRES ARE NOT USED, ARE UNCONNECTED, AND MAY BE CUT OFF.
- Connection complete

RED  
BLK

POWER SUPPLY UNIT

24V  
GND

A/C IN

Connect to power supply 24V

WHT

DMX Interface

DMX IN  
DMX OUT

Connect to Power supply GND

All other wires are not used, are unconnected, and can be cut off.

**SINGLE COLOR  
DIMMABLE**

□

ENCLOSED

- Locate and mount Power supply according to manufacturer's safety and installation guidelines provided with the power supply
- Connect RED wires from fixture to 24VDC terminal on power supply
- Connect the black wires to the ground terminal of the power supply
- The white wire is the control signal used to dim the fixture; Connect white wire to channel 1 (or the desired channel) of the DMX controller
- ALL OTHER WIRES ARE NOT USED, ARE UNCONNECTED, AND MAY BE CUT OFF.
- Connection complete.

RED  
BLK

POWER SUPPLY UNIT

24V  
GND

A/C IN

DMX IN/OUT

WHT  
BLUE  
SHIELD

Data+  
Data-  
Data GND

All other wires are not used, are unconnected, and can be cut off.

**RGB  
DIMMABLE**

□

ENCLOSED

- Locate and mount Power supply according to manufacturer's safety and installation guidelines provided with the power supply
- Connect RED wires from fixture to 24VDC terminal on power supply
- Connect the black wire to the ground terminal of the power supply
- The white, blue, and shield conductors are used for DMX communication (green is not used and is not connected):
  1. If using XLR connector, connect SHIELD to pin 1, BLUE to PIN 2, and WHITE to PIN3; Connection complete.
  2. If using a terminal block, connect SHIELD to DMX GND, BLUE to Data-, and WHITE to DATA+; Connection complete.