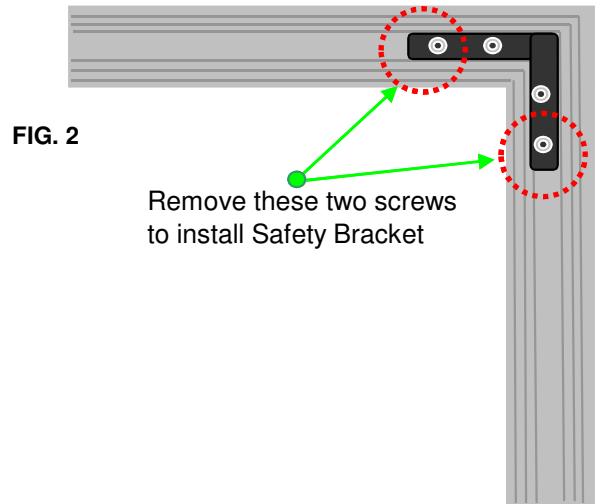
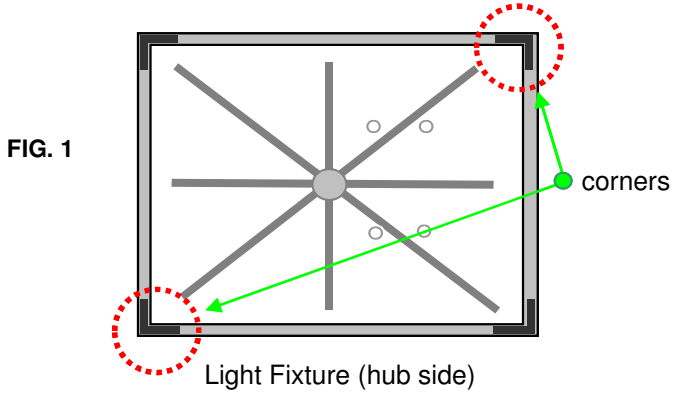


# Safety Bracket Installation Instructions

1- Secure two (2) Safety Brackets and four (4) screws (supplied in the kit)

2- Remove two (2) screws from opposing corners of the light fixture (ref. FIG. 1 & 2) .



3- Install Safety Bracket with supplied hardware (ref. FIG. 3).

**note:**

Do not overtighten screws.

